



THE MONKEY  
&  
THE ELEPHANT

2831 West Girard Avenue  
Philadelphia, PA 19130  
(267) 457-5334  
Hours: M 7-11a, T-Su 7-7p  
[www.themonkeyandtheelephant.org](http://www.themonkeyandtheelephant.org)

# The Monkey & The Elephant

A coffee shop where an ordinary purchase creates extraordinary impact

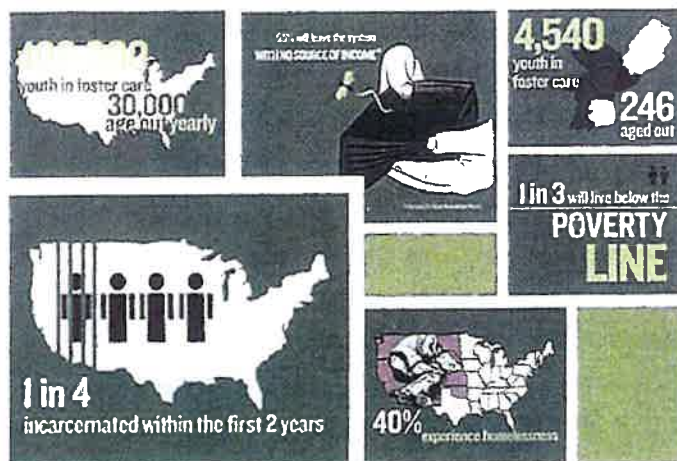
The Monkey & The Elephant helps under resourced young adults acquire the confidence and skills they need as they embark on their employment journey and transition into healthy adulthood. Through a year-long transitional employment program, we support young adults who have histories in the foster care system. Founded in 2013 and located in the

Brewerytown neighborhood of Philadelphia, every dollar spent in our coffee shop directly supports our program. Our mission is to fortify former foster youth with personal and professional skills, employment and the supportive community needed to lead a sustainable independent lifestyle.

*“ We experience new things and learn new tricks and trades and I appreciate that. I'm growing, while working. It's the best of both worlds. - Yazmeen, M&E Program Employee ”*

## Why We Do What We Do

On average, 250 youth age out of the foster care system in Philadelphia every year and immediately become ineligible for the services and supports that sustained them their whole lives. These youth are resilient and full of potential. We partner with them to help them realize their strengths. The statistics to the right provide context to the realities many who experience foster care face after aging out.



\*Statistics are only available for youth who have aged out of the foster care system. M&E works with young people ages 18+ who have spent time in the foster care system. It is our belief that the numbers are greater than the available data shows.

To learn more or make a donation visit [www.themonkeyandtheelephant.org](http://www.themonkeyandtheelephant.org)





Our comprehensive program focuses on developing skills and mindsets in the following areas: self-efficacy, teamwork and collaboration, professionalism and critical thinking, communication, and problem solving. The program includes:

- 26 hours of shift work at the coffee shop (weekly)
- 1 hour all staff meeting (weekly)
- 2.5 hours group Professional Development (weekly)
- 1 hour of one-on-one coaching (bi-weekly)

Program Employee applicants are currently referred by YVLifeSet, a program of Turning Points for Children. YVLifeSet provides intensive case management for young adults ages 17-22 who are transitioning out of foster care.

The Monkey & The elephant is active in the foster care community through convening leaders in the foster care sector to seek positive change and helping other employers work with young adults who have been affected by trauma and the foster care system.



## Program Employees Gain

- Paid work experience
- A sense of community and belonging
- A supportive space to learn and grow
- Short-term employment plus long-term personal and professional development.
- Intentional training and coaching
- Skills to obtain and maintain employment



## What Success Looks Like

Our alumni have gone on to...

- Provide housing and employment support to people experiencing homelessness
- Hold leadership roles in other cafe businesses
- Pursue vocational certificates while maintaining employment to cover living expenses
- Be hired full-time in supervisory positions with The Monkey & The Elephant

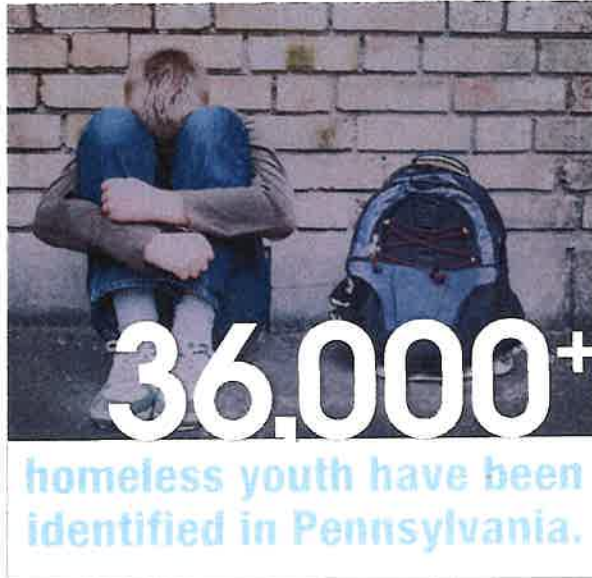


# FAST FACTS

## ECYEH

PA EDUCATION FOR CHILDREN AND YOUTH EXPERIENCING HOMELESSNESS PROGRAM:

REGION 2



Source: Pennsylvania Department of Education



identify as a homeless unaccompanied youth



This means the youth experienced homelessness without parent involvement.

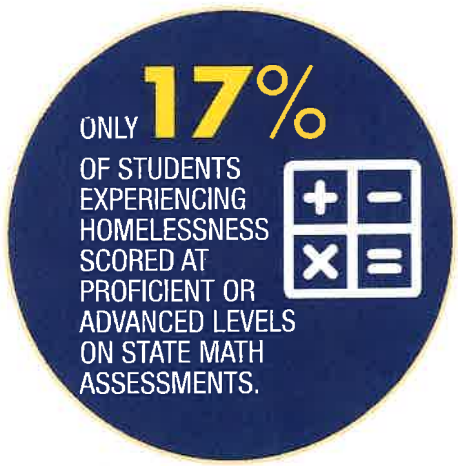


- **Top reasons** why children and youth experience homelessness are:
  - family disfunction
  - parental neglect, abuse, abandonment or incarceration.

- Students experiencing homelessness have **significant barriers to their education** including:
  - lack of positive adult supports
  - lack of credit accumulation due to high mobility
  - lack of transportation to school
  - irregular school attendance
  - challenges transitioning to adulthood

- Only 34% of students experiencing homelessness scored at proficient or advanced levels on state reading assessments.

- The **federal McKinney-Vento Act** defines homeless children and youths as individuals who lack a fixed, regular, and adequate nighttime residence. This includes: Children and youths who are sharing the housing of other persons due to loss of housing, economic hardship, or a similar reason.



For assistance or more information, contact our regional office at

**610-987-8509**  
**800-510-2741**



**ECYEH** PA EDUCATION FOR CHILDREN AND YOUTH EXPERIENCING HOMELESSNESS  
Every child deserves school stability.

Resources: PA Department of Education: 2017-2018  
Fostering Success through Education Study: January 2014