

Richard H. Hogg, P.E. - Awards Ceremony

Deputy Secretary for Highway Administration - PennDOT


Richard H. Hogg, P.E. graduated from Pennsylvania State University, where he earned a Bachelor of Science degree in Civil Engineering in 1970. He has completed both the AASHTO National Highway & Transportation Management Institute program and the AASHTO Graduate Leadership & Management Institute program.

In Mr. Hogg's career with the Department began in 1970. Since that time he has served a variety of leaderships prior to his current assignment. Mr. Hogg was the District Executive in District 10-0 (April, 1997 - April, 2006). District 10-0 consists of approximately 3,300 miles of highway and 1,600 bridges in Armstrong, Butler, Clarion, Indiana and Jefferson Counties. Mr. Hogg also served as the Assistant District Engineer for Design (1996 - 97), Assistant District Engineer for Maintenance (1992 - 96), Maintenance Support Services Engineer (1989 - 92), Armstrong County Maintenance Manager (1982 - 89).

Mr. Hogg was named Deputy Secretary for Highway Administration for the Pennsylvania Department of Transportation (PennDOT) on April 1, 2006. He directs a team of over 9,600 employees in Central Office and eleven Engineering Districts. His responsibilities include over site of maintenance, operations, design and construction of Pennsylvania's Highways and Bridges.

Mr. Hogg's career has been centered on quality improvement within the Department and as a result he has been involved with the District 10 Maintenance Unit's achievement of an ISO 14001:2004 Registration and the District 10 Construction Unit's achievement of an ISO 9001:2000 Registration. He also led a year-long partnership between the District and Indiana University of PA in pursuit of creating a "Learning Organization" within the District.

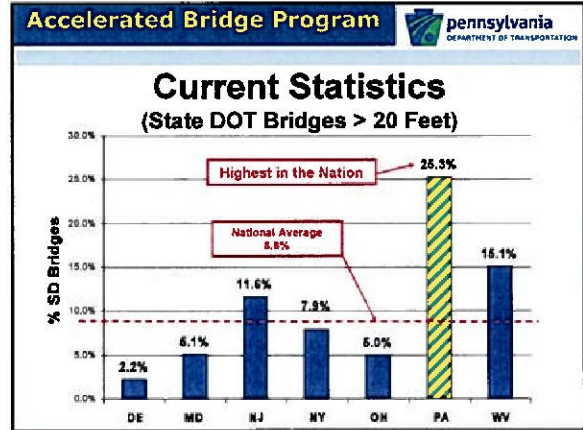
Mr. Hogg is a registered Professional Engineer and is an Associate Member of the Mid Atlantic Section of The Institute of Transportation Engineers (MASITE) and the American Society of Highway Engineers (ASHE), Allegheny Chapter.


Accelerated Bridge Program 

House Transportation Committee Hearing

PennDOT's Accelerated Bridge Program

Richard H. Hogg, PE
Deputy Secretary for Highway Administration
Pennsylvania Department of Transportation
July 29, 2008

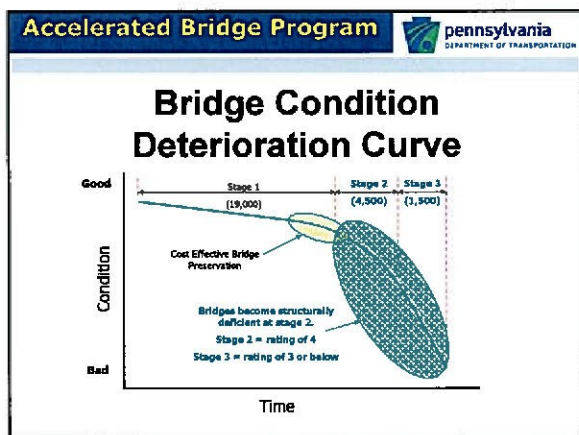



Accelerated Bridge Program 

Long Range Needs

Time	Cumulative Funding	Remaining SD % *	Remaining SD Bridges
Today	-----	23.8%	6,023
5 years	\$7.1 B	19.4 %	4,901
10 years	\$14.5 B	16.5 %	4,188
15 years	\$22.4 B	14.7 %	3,712
25 years	\$40.5 B	13.1 %	3,322

* State bridges greater than 8 feet based on bridge count



- Accelerated Bridge Program** 
- ### Key Strategies
- Sustained Funding
 - Risk Assessment Tool
 - Big Bridges (> 500 feet)
 - Bridges Project Delivery
 - Rapid Delivery
 - Conventional Delivery
 - Bridge Preservation

Challenges with I-95

- Preservation of existing infrastructure
- Regional desire to add capacity
- Corridor mobility during construction
- Costs/Funding
- 9.4% of total Statewide SD deck area
- Reduce PA's overall SD percentage by 2%



Delivery Methods

- Expanded Design Build Contracts
- Group contracts by region and type
- Continue Streamlining Design
- Use Smart Transportation principles

100-Year Life Bridges

- 100 Year Bridge Summit
- No deck joints
- Improved corrosion protection for rebars
- Use of high performance materials
- Ensure timely bridge maintenance

Implementation

- Accelerated Bridge Program (ABP) Delivery Team
- Incorporated ABP into Draft TIP with MPO/RPO's
- Coordination with Business Partners
- Coordination with Federal and State Resource Agencies

Summary

- Near-Term Results:
 - 411 SD bridges let in FY 08/09
 - 1,145 SD bridges let in first 3 years
- Mid-Term Results (After 10 Years):
 - SD bridges reduced from 23.8% to 15.9% *
 - \$14.5 B spent rebuilding SD bridges
- Continued Emphasis on Bridge Preservation:
 - \$100 million per year, each year*

* \$350 M for one year based on bridges greater than 8 feet

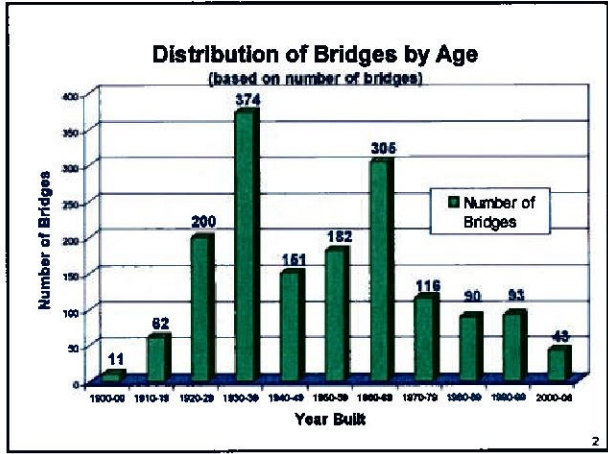
House Transportation Committee Hearing



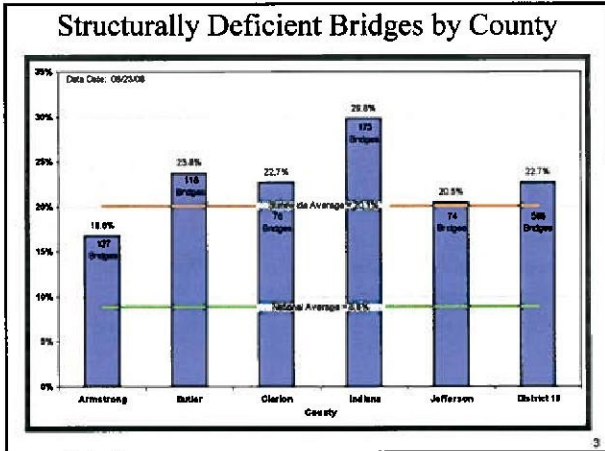
Brian Allen, P.E.
Asst. District Executive-Design
Engineering District 10-0

Distribution of Bridges by Age

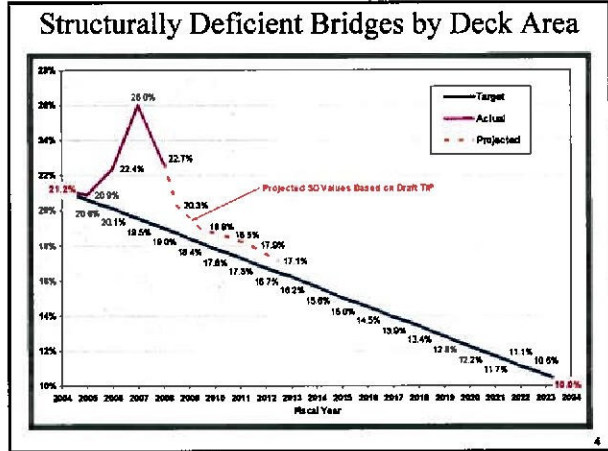
(based on number of bridges)



Structurally Deficient Bridges by County



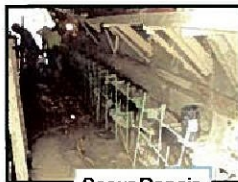
Structurally Deficient Bridges by Deck Area



Bridge Preservation

"Keeping Good Bridges Good"

Flexogrid Surface on I-80 Bridges



Scour Repair

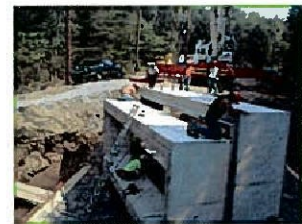


Seal Repair



Department Force Bridge Replacement/Rehabilitation

- Two per county/year
- Smaller bridges
- Cost savings



Big Bridge Construction Projects

- Main Street Viaduct ('06)
- Bolivar Bridge ('06)
- East Brady Bridge ('07)
- Pine Creek Bridge ('07)
- Foxburg Bridge ('08)
- West Kittanning Bridge ('08)
- Wayne Street Bridge ('09)



West Kittanning Bridge
Armstrong County

7

Project Delivery

	Regional Targets		District Calendar Year Projections							
	Annual Goals		CY 2008		CY 2009		CY 2010		CY 2011	
	No. of Bridges	Let Dollars (Millions)	No. of Bridges	Let Dollars (Millions)	No. of Bridges	Let Dollars (Millions)	No. of Bridges	Let Dollars (Millions)	No. of Bridges	Let Dollars (Millions)
SPIC Region	12 - 22	\$28 - \$21	25	\$29.5	20	\$35.0	21	\$29.7	17	\$31.5
Northwest Region	2 - 4	\$2.3	2	\$2.58	5	\$3.0	4	\$3.5	4	\$1.6
Northcentral Region	3 - 4	\$3.5 - \$8.5	4	\$1.5	8	\$8.2	8	\$4.1	4	\$2.8
District Totals	17 - 31	\$31.8 - \$39.6	31	\$33.6	33	\$46.2	34	\$37.3	25	\$35.9

8

Meeting Delivery Commitments

Big Bridges

- SR 356 Wayne Street - 1 bridge

Design Build

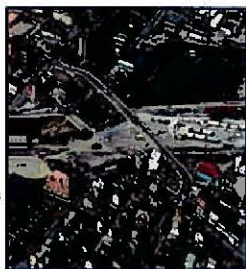
- SR 422 Metz Road - 2 bridges

Department Force Bridges

- 6 DFB Projects - 6 bridges

Bridge Preservation

- SR 68 NCABB Bridges PM - 4 bridges
- SR 4001 over I-80
- I-79 PM - 3 bridges
- SR 830 over I-80 - 2 bridges
- Indiana Co. NCABB Bridges PM - 3 bridges
- SR 210 Bridge PM



Wayne Street Viaduct
Butler County

9

Meeting Delivery Commitments

Performance Metrics

- Percent of SD Bridges by Deck Area
- Committed Bridge Projects (Number)
- Committed Bridge Projects (Dollars)
- Monitor Bridge Analysis Backlog (90)
- Monitor Bridge Analysis Backlog (120)
- Bridge Maintenance Priorities (0 and 1)
- Engineer's Estimate vs. Low Bid



Committed Bridge Projects

10